

**TRENCH WIDTHS-RIGID PIPES**

NORMAL PIPE DIAMETER (mm)	100	150	225	300	375	450	525	600	750	900	1050	1200	1350
TRENCH WIDTH MIN (mm) (W)	450	500	600	700	950	1050	1150	1250	1400	1950	2100	2300	2450
TRENCH WIDTH MAX (mm) (W)	650	700	800	900	1150	1250	1350	1450	1600	2150	2300	2500	2650

**TRENCH WIDTHS-FLEXIBLE PIPES**

NOMINAL PIPE DIAMETER (mm)	100	150	200	250	300
TRENCH WIDTH MIN (mm) (W)	450	450	600	700	700
TRENCH WIDTH MAX (mm) (W)	600	600	700	700	850

**DIMENSIONS-"bc"**

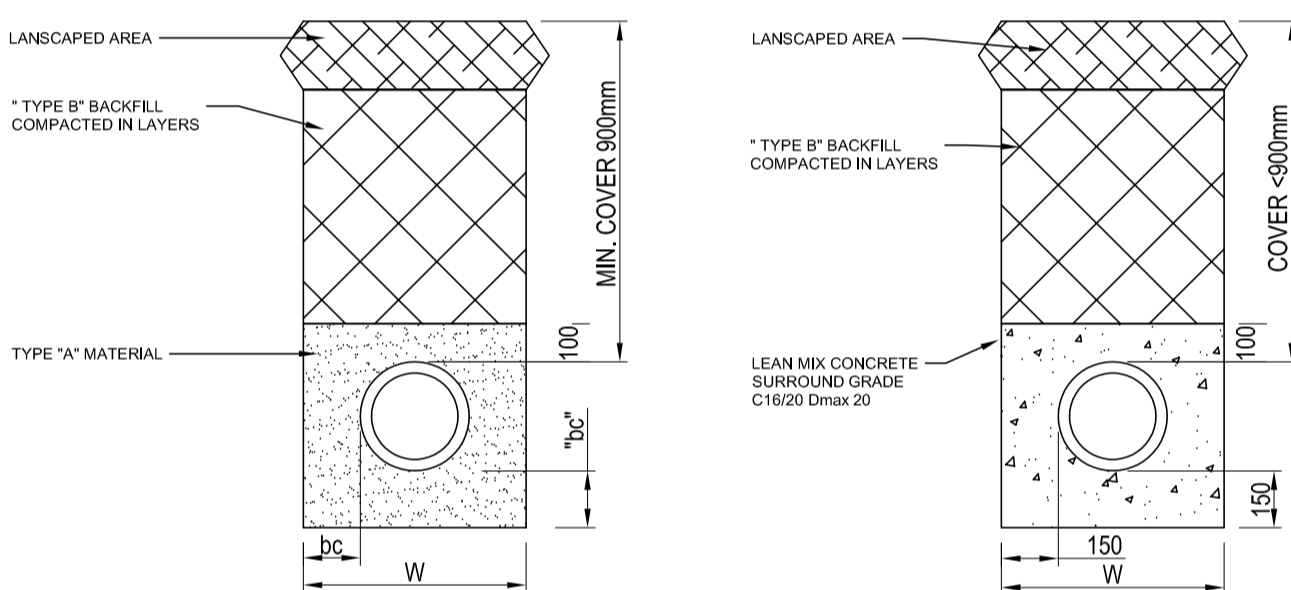
NOMINAL PIPE DIAMETER (mm)	100-450 incl.	525-600 incl.	750	900	1050	1200
bc (mm)	100	150	200	225	250	300

DIMENSION-"b"	PIPES UP TO AND INC. 600mm DIA	PIPES GREATER THAN 600mm DIA
UNIFORM SOIL	100mm	200mm
ROCK	200mm	300mm

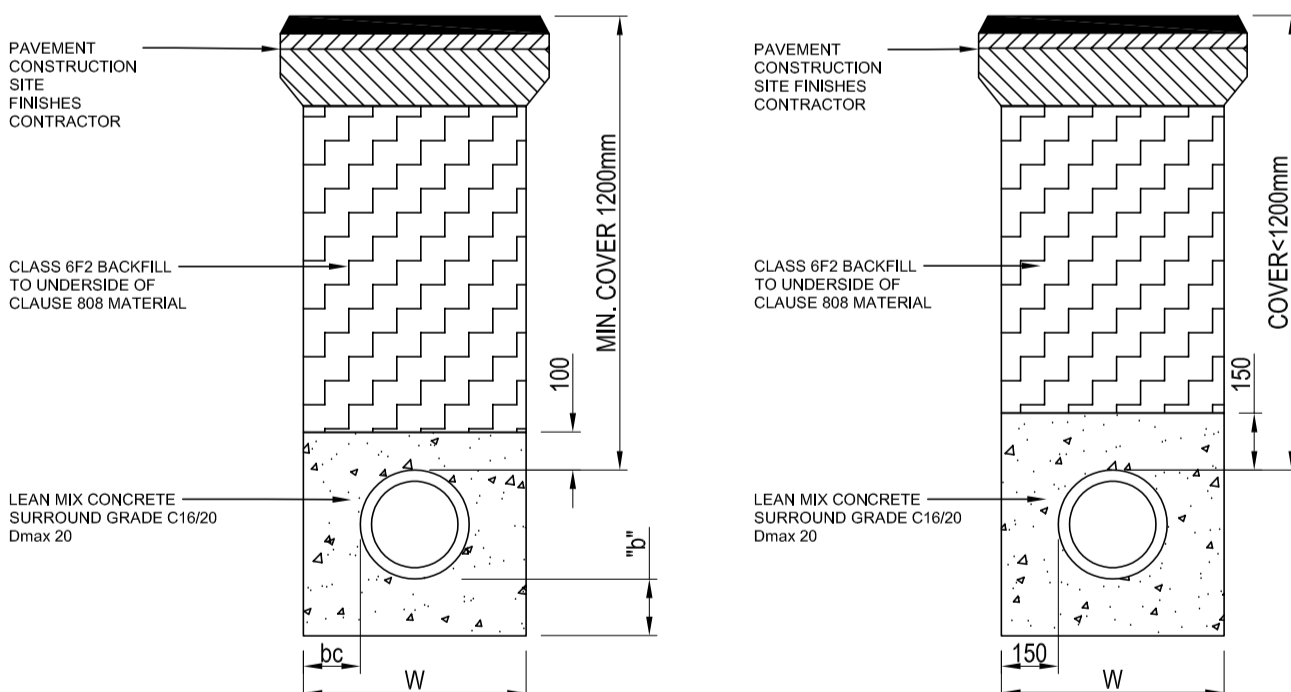
**TYPE "A" MATERIAL:**  
BROKEN STONE OR GRAVEL, GRADING AS FOLLOWS:-

- RIGID PIPES - PIPE DIAMETER UP TO AND INCLUDING 600mm  
-SIEVE SIZE GREATER THAN 5mm AND LESS THAN 12mm  
- PIPE DIAMETER GREATER THAN 600mm DIA  
-SIEVE SIZE GREATER THAN 5mm AND LESS THAN 19mm
- FLEXIBLE PIPES : SIEVE SIZE GREATER THAN 5mm AND LESS THAN 10mm

**TYPE "B" MATERIAL:**  
SELECTED FILL UNIFORM READILY COMPACTABLE MATERIAL FREE FROM : CLAY LUMPS RETAINED ON 75mm SIEVE, STONES RETAINED ON 25mm. SIEVE, TREE ROOTS, VEGETABLE MATTER, BUILDING RUBBISH AND FROZEN SOIL.

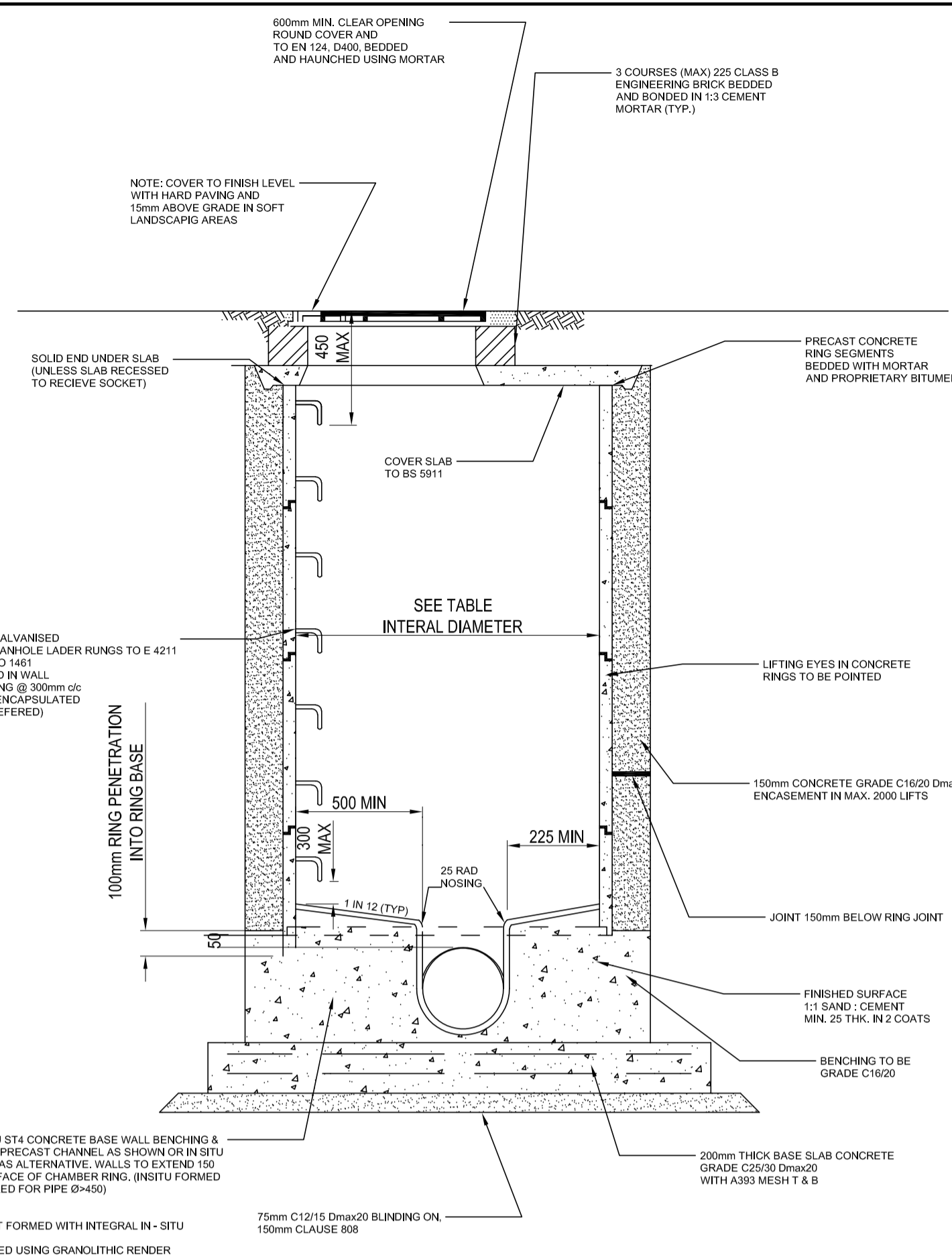


**UNPAVED AREAS**

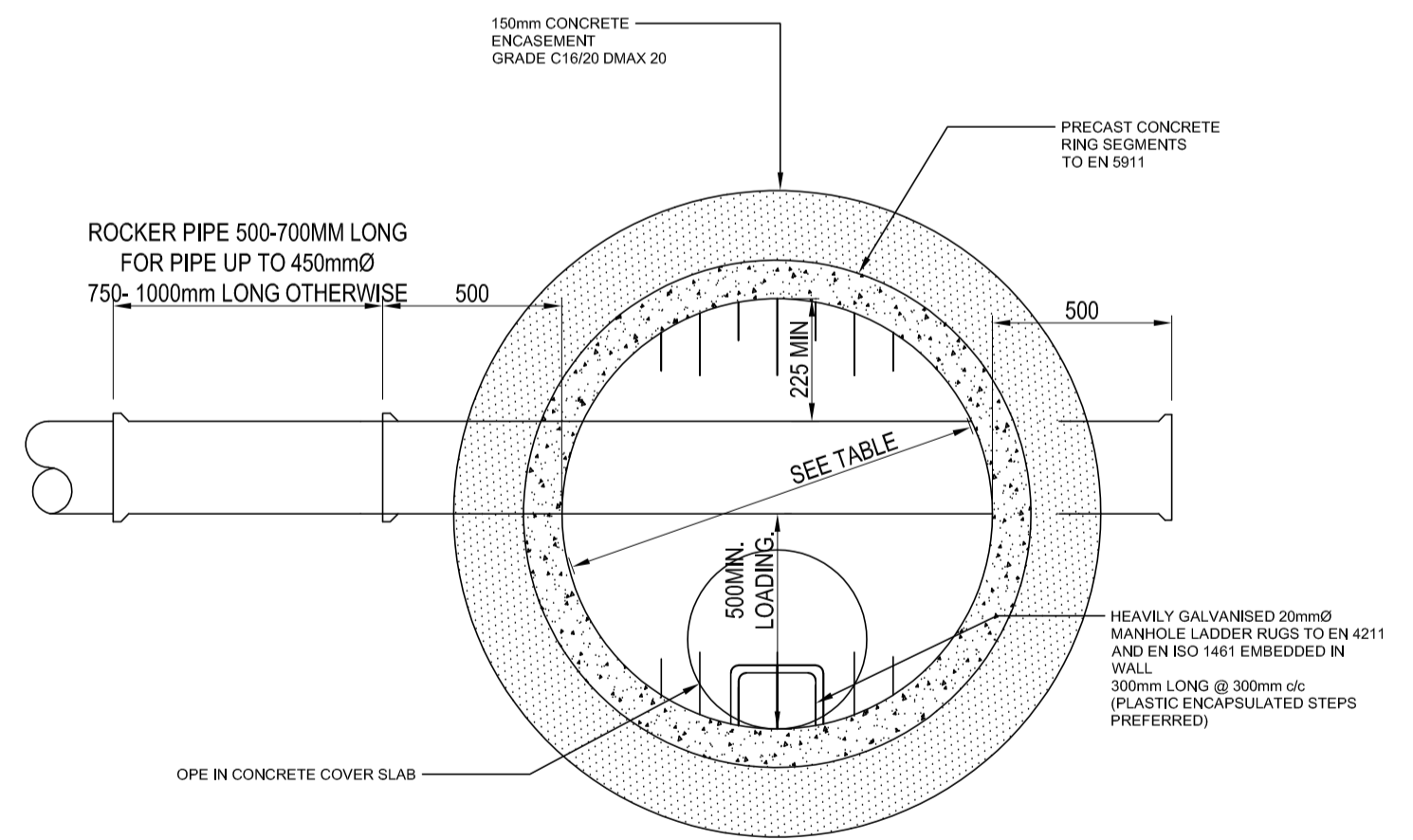


**PAVED AREAS**

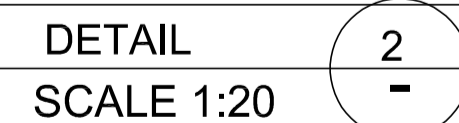
**PIPE TRENCH DETAILS**



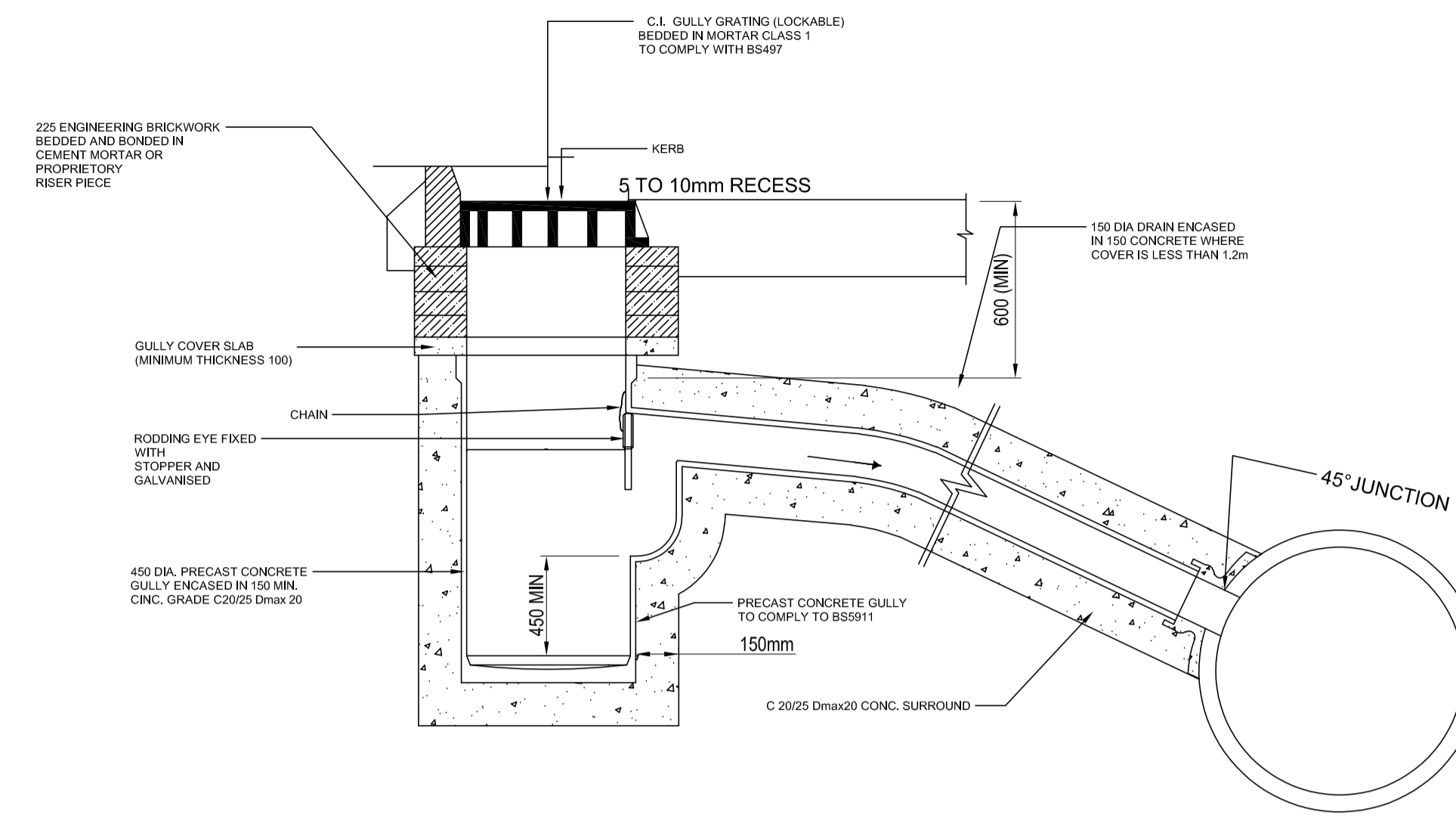
**PRECAST CONCRETE MANHOLE <3000 DEEP, <525mm PIPES DIAMETER**



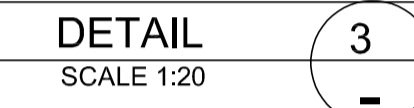
**TYPICAL STRAIGHT THROUGH PRECAST CONCRETE MANHOLE**



CIRCULAR MANHOLES			MATERIAL DEPTH		RECTANGULAR MANHOLES (MINIMUM STRAIGHT THROUGH DIMENSIONS)		
OUTLET DIAMETER	INTERNAL DIMENSIONS	EXTERNAL DIMENSIONS INCL CONC SURROUND	<3m	>3m	OUTLET DIAMETER	DEPTH	INTERNAL DIMENSION S
UP TO 375mmØ	1200mmØ RING	1680mm	RC & PCC	PCC	150 ≤ D ≤ 375	ALL	1200 x 910
450mmØ	1350mmØ RING	1840mm	RC & PCC	PCC	150 ≤ D ≤ 375	< 1.5M	1200 x 1135
525mmØ	1500mmØ RING	2010mm	RC & PCC	PCC		> 1.5M	1200 x 1360
600mmØ	1500mmØ RING	2010mm	PCC	PCC		< 1.5M	1500 x 1660
750mmØ	1500mmØ RING	2010mm	PCC	PCC		> 1.5M	1500 x 1885
900mmØ	1800mmØ RING	2330mm	PCC	PCC			
1050mmØ	2100mmØ RING	2650mm	PCC	PCC			

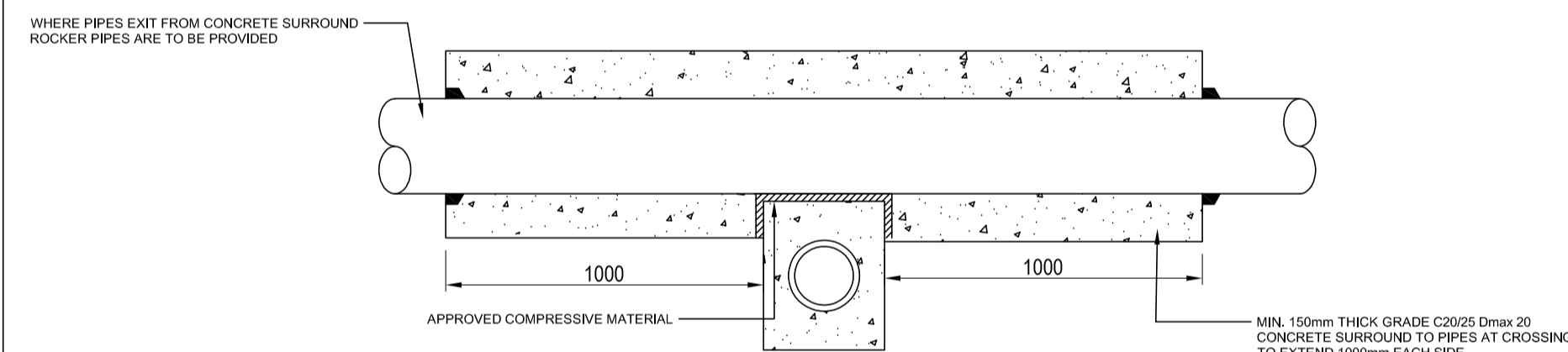


**TYPICAL PRECAST ROAD GULLY**



**TYPICAL DETAIL AT PIPE CROSSING WITH ADEQUATE COVER**

>1200mm COVER IN PAVED AREAS  
>900mm COVER IN LANDSCAPED AREAS  
(FOR GAPS BETWEEN PIPES OF LESS THAN 300mm)



**TYPICAL DETAIL AT PIPE CROSSING WITH SHALLOW COVER**

<1200mm COVER IN PAVED AREAS  
<900mm COVER IN LANDSCAPED AREAS  
(FOR GAPS BETWEEN PIPES OF LESS THAN 300mm)



**BLOCKWORK INSPECTION CHAMBER FOR FILTER DRAINS**



**GENERAL NOTES:**

- THIS DRAWING IS TO BE READ IN CONJUNCTION WITH ALL RELEVANT ARCHITECTS AND ENGINEERS DRAWINGS AND SPECIFICATIONS.
- DO NOT SCALE THIS DRAWING. ANY AMBIGUITIES, OMISSIONS AND ERRORS ON DRAWINGS SHALL BE BROUGHT TO THE ENGINEERS ATTENTION IMMEDIATELY. ALL DIMENSIONS MUST BE CHECKED / VERIFIED ON SITE.
- ALL DIMENSIONS ARE IN MILLIMETRES UNLESS NOTED OTHERWISE.
- FOR GENERAL NOTES REFER TO DRAWING.

P01	S4 SUITABLE FOR STAGE APPROVAL - Planning Issue	04.03.19	IY	AC
Rev:	Description:	Date:	By:	Chkd:



11 Penton Lane, Dublin 2, D02 CX82  
+353 (0)1 507 9447  
dublin@curtins.com  
www.curtins.com

**SUITABLE FOR STAGE APPROVAL S4**

**KILCOCK COMMUNITY CENTRE**

**PROPOSEDSITE SERVICES DETAILS**

Size:	Date:	Drawn By:	Designed By:	Checked By:
A1	24/01/19	PT	AC	DH
Scale:	AS SHOWN			
Project No:	Originator:	Zone:	Level:	Type: Discipline: Category / Number: Rev:
067368 - CUR - 00 - XX - DR - C -				90004 -P01